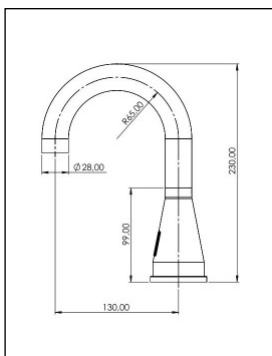




LOex Sens-Inox Tonga2 T90S

Electronic self-closing pillar tap, swivel spout, single-pipe inlet for cold or pre-mixed water or with UT-mixture according to EU-RL, HACCP, LMHV.

Installation version DMK



Tendertext

Non-contact self-closing DN 15
Washtable-tap, stainless steel satin;
with rotating and lockable curved spout,
aerator*, optosensor.
For premixed water (UT mixer).
Electronically controlled - with integrated electronics (Donau/E8A, Weser/E9A).

- rotatable and lockable (Fig.) ii
Reach 130 mm
Height of outlet opening from WT 136 mm
Total height from WT 230 mm

Operating version/

EAN-Number article-number

- integrated electronic "LOex Donau", **B**
- external plug-in power supply unit - 12VDC
40 34154 02317 8 TG2SE8AST90ii13 5_DMK

- integrated electronic "LOex Donau", **C**
- external Meanwelltransformer - 12VDC
40 34154 02318 5 TG2SE8ALT90ii13 5_DMK

*Economy jet regulator up to < 6 ltr/min
a.A. against surcharge.

for Battery-operated - 6VDC

- integrated electronic "LOex Weser", **E**
- external batterycontainer(for 4x1,5 AA-batteries)
40 34154 02278 1 TG2E9ABT90ii13 5_DMK



Alternatives in powder coating

Surcharge u.r., no minimum order quantity.

Signalred matt RAL 3001
Jetblack matt RAL 9005
Light Grey matt RAL 7035

Shades of colour in adjacent illustrations are not binding.

Optional -



Remote control for sensor controls in direct current (DC)

For adapting electronic parameters and activating
legionella flushing
- for LOex Donau and LOex Weser electronics -

40 34154 01393 3 Zb 073



plugadaptor for LOex Donau 12VDC **B**
plugadaptor for LOex Weser 6VDC **D**
IP68-connector



Meanwell-transformer for LOex Donau 12VDC **C**
IP67; mains plug cable; IP68-connector
Velcro or screw fastening



Batterycontainer **E**
for 4x1,5V AA-Alkalibatteries, IP68-connector
Velcro or screw fastening



DMK-Mixer-Modul-Set
solenoid-valve
Mixing by
DMK mixer for direct mounting
on angle-valve
with integrated checkvalves WC/WH
accessfilter f. angle-valve
Connecting flexhose to WH-angle-valve

angle-valve(on-site)

Tapsocket -
- rotateable and lockable (ii)
Basisdiameter 59,5 mm
Tap hole diameter 35 mm
Quick fixing for panel thicknesses up to appr. 50 mm

Supply lines-
Flexhose 3/8"cn ca. 500 mm
E8/E9 cable to source of energy ca. 600 mm
cable to solenoid-valve ca. 500 mm

Also adaptable for pressure-less usage.

Also for de-mineralised water
with electronic
LOex Donau E8/24VDC and
24VDC-solenoid-valve in stainless-steel.

Self-closing wash-table tap DN 15, stainless steel (AISI304L) matt
brushed; electronically controlled, with single-pipe inlet for premixed
water; with rotatable and lockable spouts, jet regulator.
Activated by the optosensor integrated into the fitting.

The electronic control systems -

- tap-integrated -

- LOex Donau[E8A] (12VDC, 9 W),

- LOex Weser[E9A] (6VDC, 2 W) -

Default programm, optional remote for activating legionella flushing
and for adapting range, running times/intervals.

- Sources of energy -

- plugadaptors(12VDC resp. 6VDC)with IP68-connector

- MWTrafo 12VDC, IP67 with powercord and IP68-connector

- Batterycontainer for 4x1,5V AA-Alkalibatteries

- Solenoid-valves -

- mono-stabile 12VAC/DC, 2x3/8"m, Faston - for LOex Donau,

- bi-stabile 6VDC, 2x3/8"m, Faston - for LOex Weser

Flowrate ca. 19 Ltrs/min/3bar FD. Min. Flowpressure ca. 0,3bar.

Mech. Pre-mixer (brass, chrome-plated) with RüVe (WW/KW) for
direct mounting (DMK) on angle valve, connecting hose to angle valve.
Filter inserts for 3/8" angle valves enclosed.

Typ: **LOex Tonga2**

Subject to technical and price changes
without prior notice. This offer is sub-
ject to change.
Our terms and conditions of sale and
delivery apply exclusively.
Status Jan 2026

Previous offers have lost their validity.
Pricing: €/p.unit; ex warehouse, pac-
ked; net.

Delivery dates on request.

Place of jurisdiction for registered tra-
ders and persons under civil law:
Frankfurt/M.

Scope of delivery: Fitting as described,
ready for installation, complete.

EU-USID: DE111985600



LOTZ Exim Trading

Sensortechnik für Küchen-, Catering-,
Labor- und Sanitärbereiche.

Es gibt nur wenig, was sich so bezahlt macht.-
- Für Sie und unsere Umwelt !